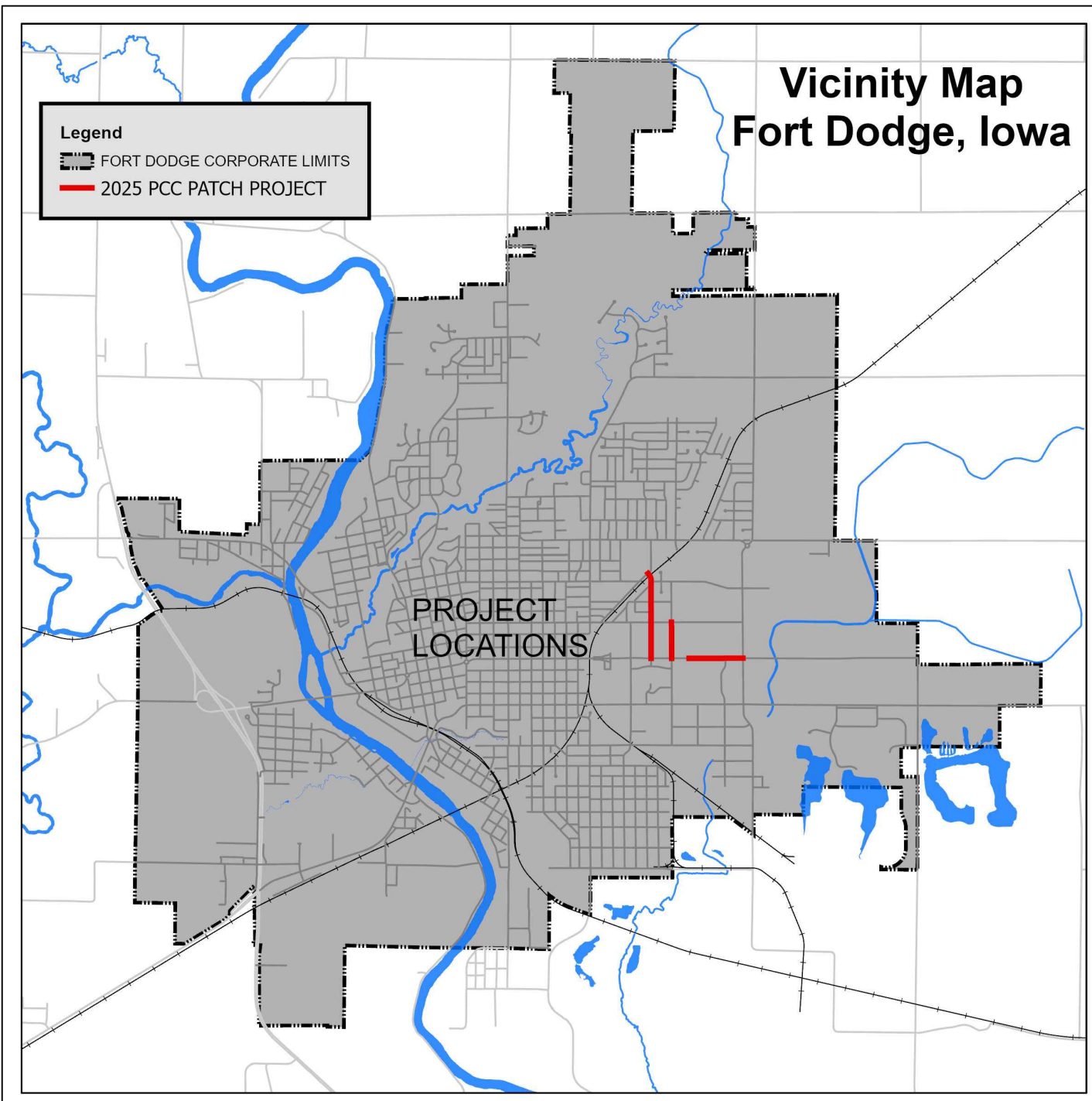


2025 PCC PATCH PROJECT

FORT DODGE, IOWA

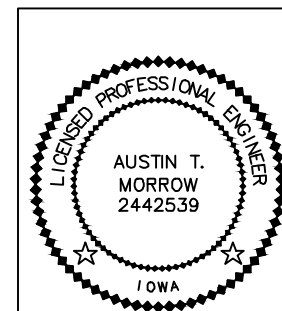
The Iowa Statewide Urban Design and Specifications (SUDAS) shall apply to construction work on this project.
(www.iowasudas.org)



INDEX OF DRAWINGS

- A.1 - TITLE SHEET
- B.1 - ESTIMATED REFERENCE INFORMATION
ESTIMATED PROJECT QUANTITIES
GENERAL NOTES
- C.1-C.2 - DETAILS
- D.1-D.3 - PAVING PLAN SHEETS

| CITY OF FORT DODGE | |
|--------------------|---|
| MAYOR: | MATT BEMRICH |
| COUNCIL: | KIM ALSTOTT JEN CRIMMINS DAVID FLATTERY QUENNEL MCCALED CAMERON NELSON LYDIA SCHUUR MEGAN SECOR |
| CLERK: | JEFF NEMMERS |
| CITY ENGINEER: | CHAD SCHAEFFER, P.E. |



I HEREBY CERTIFY THAT THIS ENGINEERING DOCUMENT WAS PREPARED BY ME OR UNDER MY DIRECT PERSONAL SUPERVISION AND THAT I AM A DULY LICENSED PROFESSIONAL ENGINEER UNDER THE LAWS OF THE STATE OF IOWA.

SIGNATURE: *Austin Morrow* DATE: 2/25/2025
AUSTIN T. MORROW, PROFESSIONAL ENGINEER

MY LICENSE RENEWAL DATE IS DECEMBER 31, 2025

PAGES OR SHEETS COVERED BY THIS SEAL:
All Pages (1-7)

| | | | |
|--------------------------|--|----------------|-------------|
| Designed David Odor PLS | 2025 PCC PATCH PROJECT City of Fort Dodge Engineering Department FORT DODGE, IA 819 1ST AVE S | Approved _____ | Title _____ |
| Drawn David Odor PLS | | Title Sheet | Date _____ |
| Checked Austin Morrow PE | | | |

GENERAL NOTES

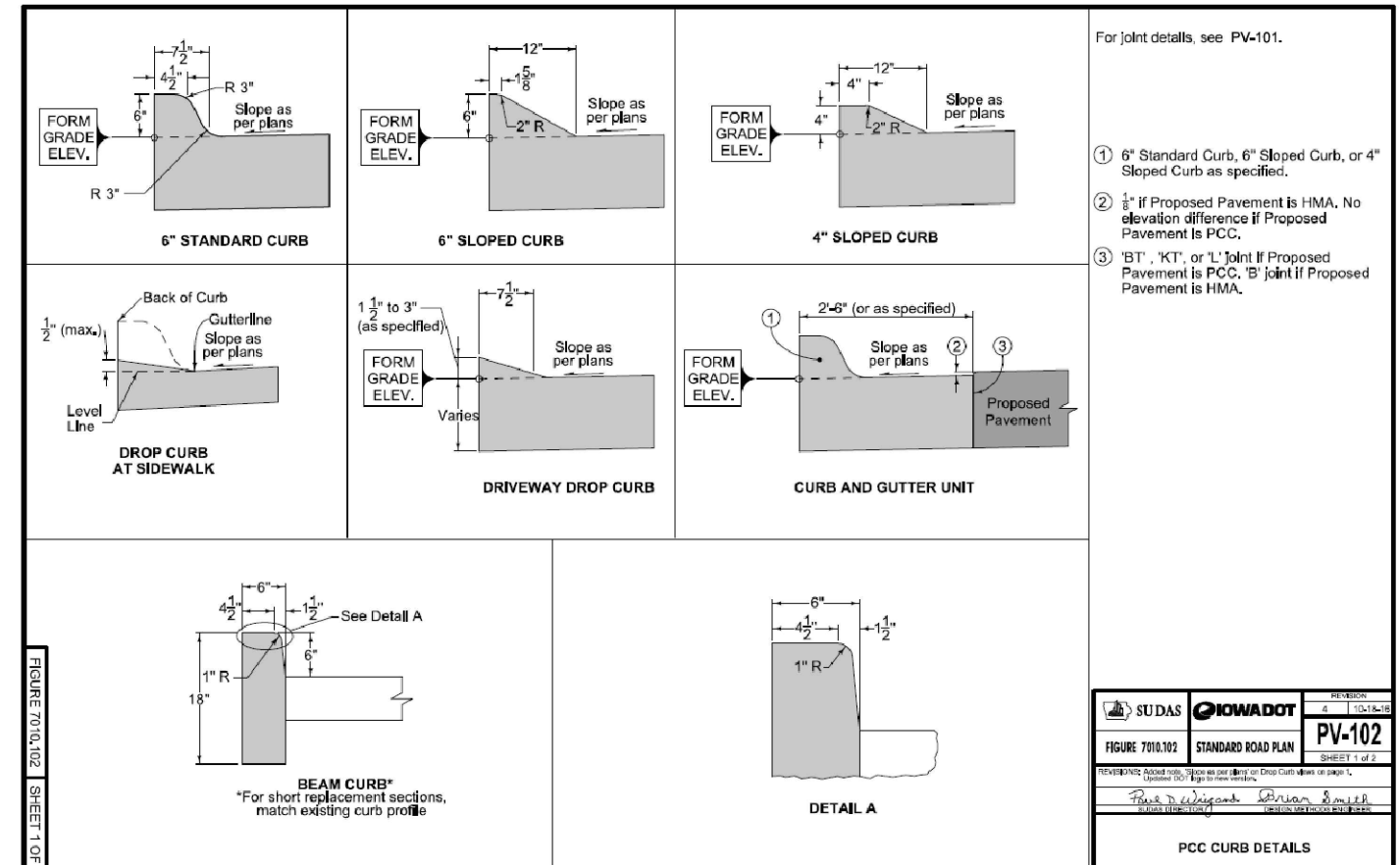
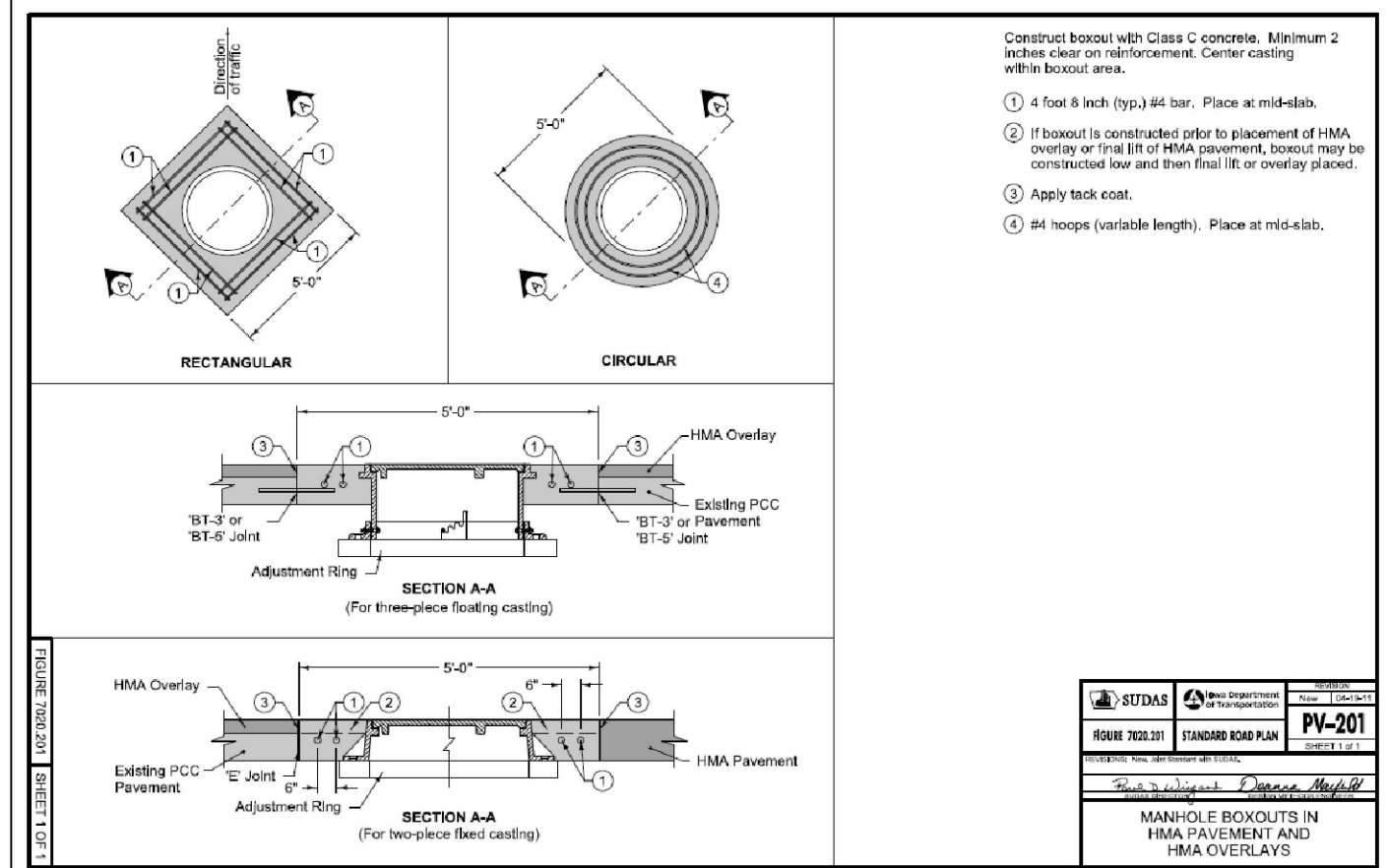
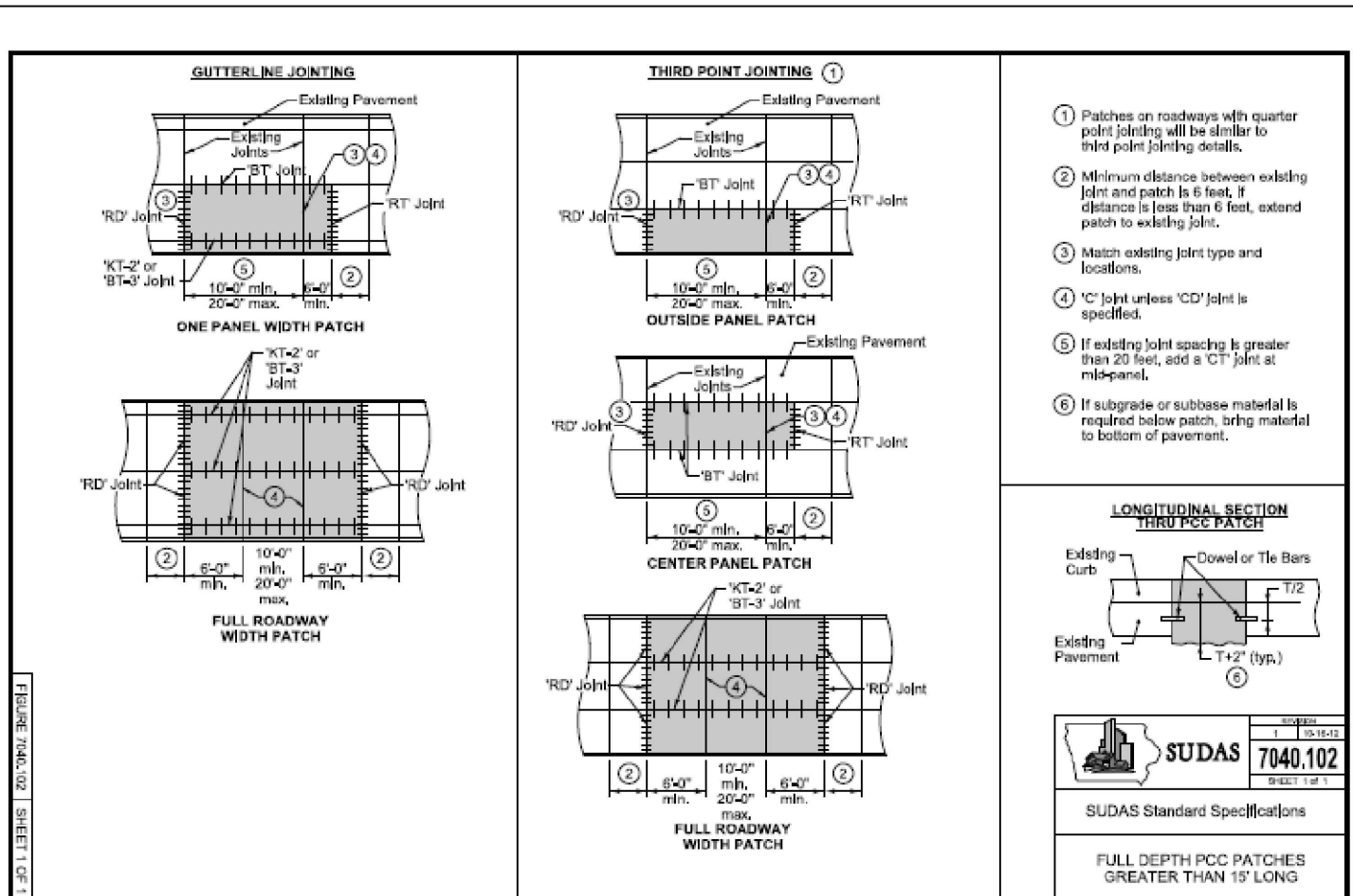
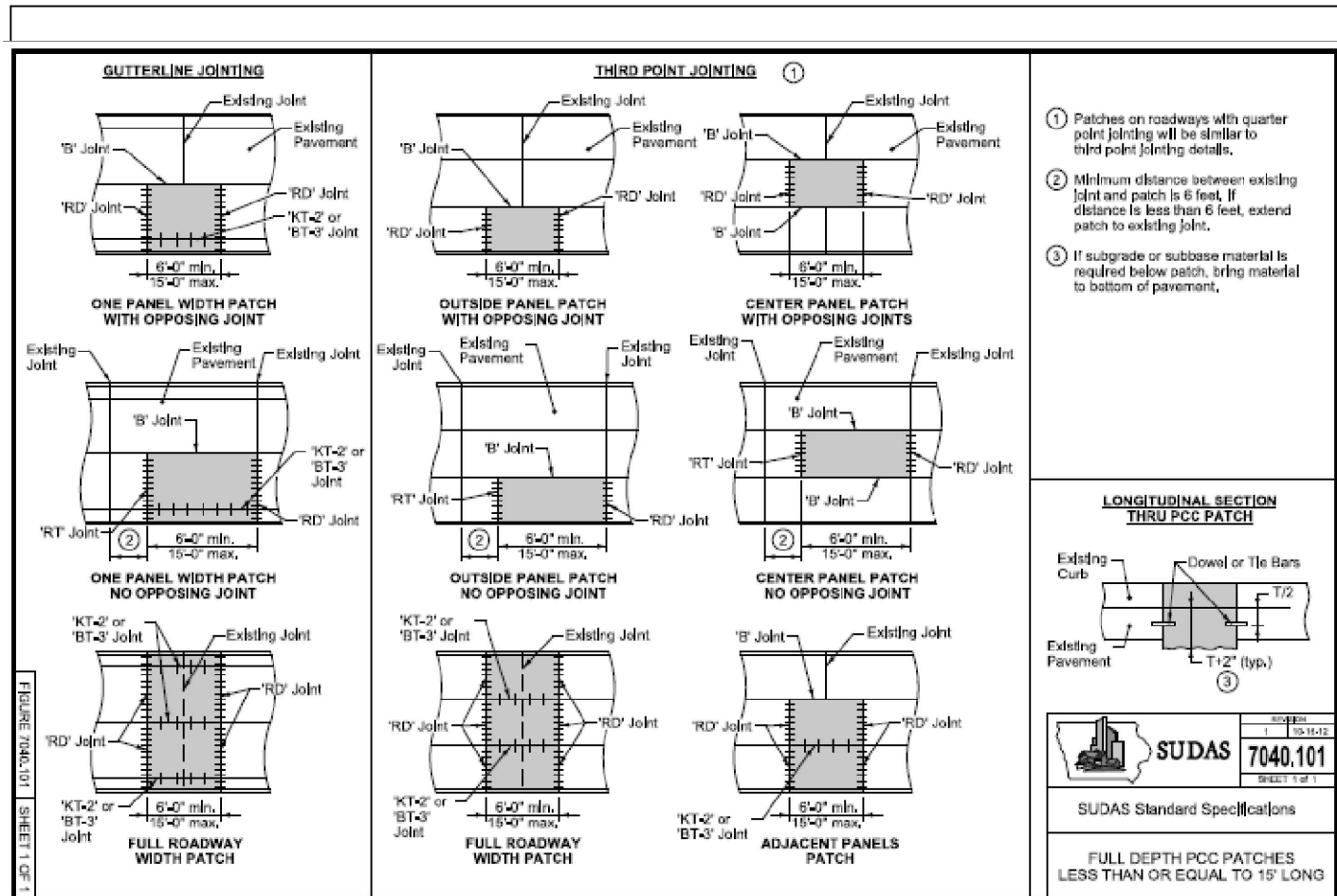
Date:
2-1-2025

| ESTIMATE REFERENCE INFORMATION | | | | | |
|--------------------------------|----------------------------|--|---|---------------|-------|
| ITEM NO. | ITEM CODE | ITEM | DESCRIPTION | PLAN QUANTITY | UNITS |
| 1 | 7040-3.02-A-B | 8" PCC REMOVAL | ITEM SHALL INCLUDE, BUT IS NOT LIMITED TO 10" PCC REMOVAL, SAWING, REMOVING AND DISPOSING OF EXISTING PAVEMENT AND REINFORCING, AND RESTORE SUBGRADE AS SPECIFIED IN SUDAS 7040 3.03. SAWCUT IS CONSIDERED INCIDENTAL. JOINT SEALING ON THE PATCH PERIMETER AND WITHIN THE PATCH SHALL BE CONSIDERED INCIDENTAL. | 4,411 | SY |
| 2 | 7040-3.02-C | 10" PCC FULL DEPTH PATCH | ITEM SHALL INCLUDE, BUT IS NOT LIMITED TO THE PLACEMENT OF 12" PCC, OR 2 INCHES THICKER THAN THE REMOVED PCC MATERIAL. TIE BARS AND DOWEL BARS SHALL BE CONSIDERED INCIDENTAL TO THE PATCH. MOISTEN THE SUBGRADE CONFORM TO SECTIONS 7010 ON BARS, FORMS AND PATCH FINISH AND JOINTS, ALL OF WHICH ARE INCIDENTAL TO THE PATCH. | 4,411 | SY |
| 3 | 7020-1.08-I | FIXTURE ADJUSTMENT | ITEM INCLUDES ADJUSTING EXISTING MAHOLE CASTINGS TO GRADE AND MANHOLE BOXOUTS AS DEPICTED IN SUDAS FIGURE 7010.103 FOR PCC BOXOUTS. IF REPLACEMENT IS DEEMED NECESSARY, NEW CASTINGS SHALL BE SUPPLIED BY THE CITY. REFER TO PLANS FOR LOCATIONS OF ADJUSTMENTS. ADDITIONAL ADJUSTMENTS MAY BE AUTHORIZED BY THE ENGINEER. | 15 | EA |
| 4 | 7030-1.08-A 7030-1.08-E | 30" CURB AND GUTTER, REMOVE AND REPLACE | THIS ITEM SHALL INCLUDE, BUT IS NOT LIMITED TO, THE REMOVAL AND REPLACEMENT OF A 30 INCH CURB SECTION, SIX INCH CURB HEIGHT. CONCRETE SHALL BE CLASS-C MIX. HAND FINISHING METHODS WILL BE ALLOWED FOR ALL SECTIONS. CONSTRUCTION JOINTS SHALL BE PLACED EVERY 15 FEET OR MATCH EXISTING JOINTING. ANY TRAVELWAYS DISTURBED BY THE PLACEMENT OF CURB AND GUTTER WILL BE INCIDENTAL AND REQUIRE REPLACEMENT TO EXISTING DEPTH. ITEM SHALL ALSO INCLUDE BASE MATERIAL NEEDED FOR STABILIZATION AND THE PLACEMENT OF THE NEW CURB AND GUTTER. | 30 | LF |
| 5 | 7030-1.08-A 7030-1.08-E | 6" PCC SIDEWALK/ DRIVE, REMOVE AND REPLACE | THIS ITEM SHALL INCLUDE, BUT IS NOT LIMITED TO, THE NECESSARY MATERIALS TO COMPLETE THE SIDEWALK / DRIVEWAY. THIS ITEM ALSO INCLUDES THE REMOVAL OF THE EXISTING SIDEWALK / DRIVEWAY. CONCRETE SHALL BE CLASS-C MIX. ITEM INCLUDES ALL SIDEWALKS TO THE DEPTH SPECIFIED IN THE PLANS OR SPECIFICATIONS. CONTRACTOR SHALL ENSURE PROPER GRADES AND ACCESSIBILITY COMPLIANCE WITH THE ENGINEER PRIOR TO THE PLACEMENT OF THE CONCRETE. ITEM SHALL ALSO INCLUDE BACKFILL MATERIAL AND SEEDING OF ANY DISTURBED AREA AS A RESULT FROM THE PLACEMENT OF THE NEW SIDEWALK / DRIVEWAY. | 1,958 | SF |
| 6 | 9010-1.08-B 9010-2.02-A | SEEDING AND SEED MIXTURE | SEEDING, FERTILIZING, AND MULCHING FOR HYDRAULIC SEEDING: ITEM INCLUDES, BUT IS NOT LIMITED TO, REMOVAL OF ROCK AND OTHER DEBRIS FROM THE AREA; REPAIRING RILLS AND WASHES; PREPARING THE SEEDBED; FURNISHING AND PLACING SEED, INCLUDING ANY TREATMENT REQUIRED; FURNISHING AND PLACING FERTILIZER AND MULCH; AND FURNISHING WATER AND OTHER CARE DURING THE CARE PERIOD, WITH A TYPE 1 (PERMANENT LAWN MIXTURE) AND SOWN DURING THE SUDAS SPECIFIED DATES. | 2,948 | SF |
| 7 | 7030-1.08-A 7030-1.08-E | DETECTABLE WARNING DEVICE | ITEM INCLUDES FURNISHING AND INSTALLING DETECTABLE WARNING DEVICES AT INTERSECTION RAMPS. CONTRACTOR SHALL ENSURE PROPER PLACEMENT OF PANELS WITH THE ENGINEER PRIOR TO PLACING CONCRETE. DETECTABLE WARNING DEVICE MATERIAL AND COLOR SHALL FOLLOW THE STANDARDS OF THE CITY OF FORT DODGE. | 64 | SF |
| 8 | | TRAFFIC CONTROL | TRAFFIC CONTROL DEVICES SHALL MEET THE REQUIREMENTS OF AND BE PLACED ACCORDING TO THE CURRENT EDITION OF MUTCD. CONTRACTOR SHALL SUBMIT TRAFFIC CONTROL PLANS TO THE CITY FOR APPROVAL PRIOR TO SET UP. CONTRACTOR IS REQUIRED TO GIVE 48 HOURS NOTICE BEFORE ANY CLOSURES. CONTRACTOR IS RESPONSIBLE FOR NOTIFYING THE BORDERING PUBLIC IF ACCESS WILL BE DISRUPTED. | 1 | LS |
| 9 | | CONTINGENCY | CONTINGENCY FOR UNFORSEEN CIRCUMSTANCES DUE TO SUBGRADE AND UTILITY ISSUES THAT ARE NOT EVIDENT FROM THE ORIGINAL DESIGN AND DEVELOPMENT PERSPECTIVE OF THE PROJECT. | 1 | LS |

NOTES:

- 1) Curb and gutter shall be considered incidental to integral pours of patches. Only where just curb and gutter sections are separate that the 30 inch remove and replace quantity shall be used.
- 2) Traffic control shall be determined by communication between Contractor and Engineer, for the safety of the construction team, and the general traveling and pedestrian public.
- 3) Fixtures, such as cast iron manholes and intakes shall be replaced, as needed and determined by the Engineer on the project, supplied by the city.
- 4) Joint sealing shall be considered incidental to the placement of concrete and must be completed by removal of foreign material from the joints and before the opening to traffic.
- 5) Girls State Softball tournament scheduled for July 21st-25th, 2025, must not be impacted by construction. No work during this week, or the project must be completed by this week.

| | | | |
|---|----------------------|--------------------------|-------------------------------|
| Designed David Odor PLS | Drawn David Odor PLS | Checked Austin Morrow PE | |
| 2025 PCC PATCH PROJECT City of Fort Dodge Engineering Department 819 1ST AVE S FORT DODGE, IA | | | Approved _____ Title _____ |
| Estimated Quantities and Reference Information | | | |
| GENERAL NOTES | | | |
| | | | |
| Date: 2-1-2025 | | | |
| Sheet B.1 | | | |



Designed David Odor, PLS
 Drawn David Odor, PLS
 Checked Austin Morrow, PE

2025 PCC PATCH PROJECT
 City of Fort Dodge Engineering Department
 FORT DODGE, IA
 819 1ST AVE S

Date _____
 Title _____
 Approved _____
 Detail Sheet

GENERAL NOTES

Date:
 2-1-2025
 Sheet C.1

FIGURE 7030.206 SHEET 1 OF 1

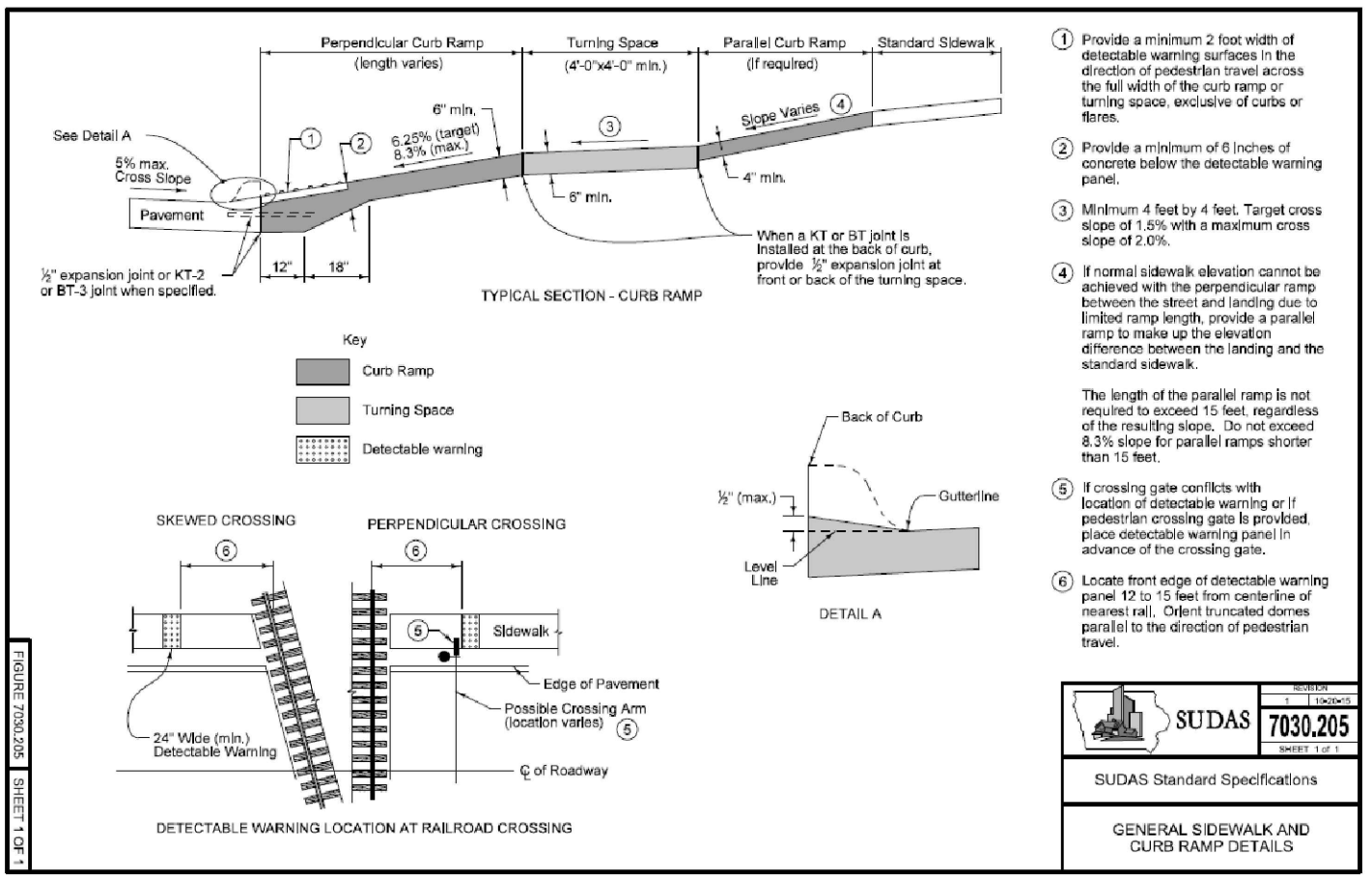


FIGURE 7030.207 SHEET 1 OF 1

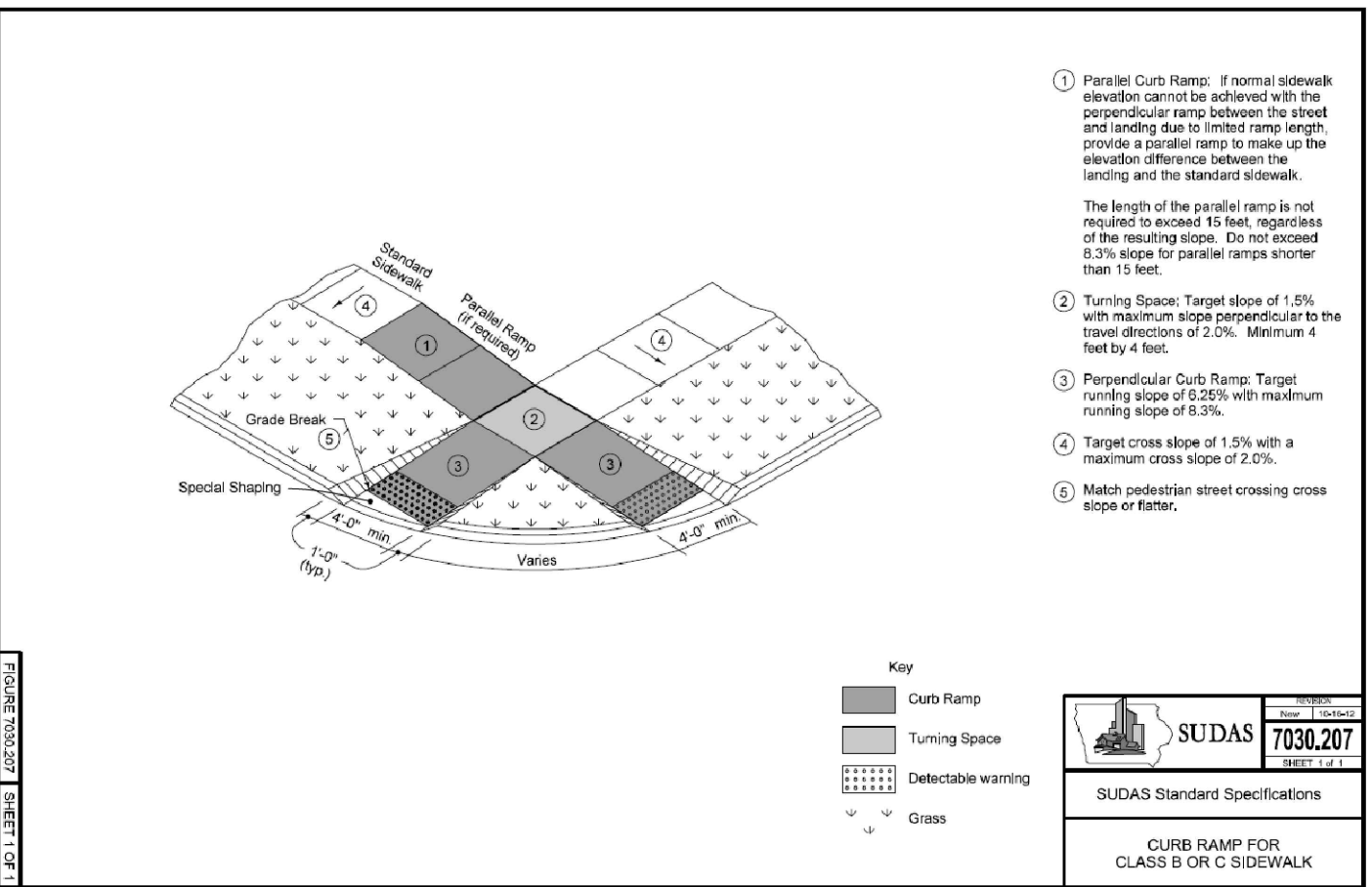


FIGURE 7030.208 SHEET 1 OF 1

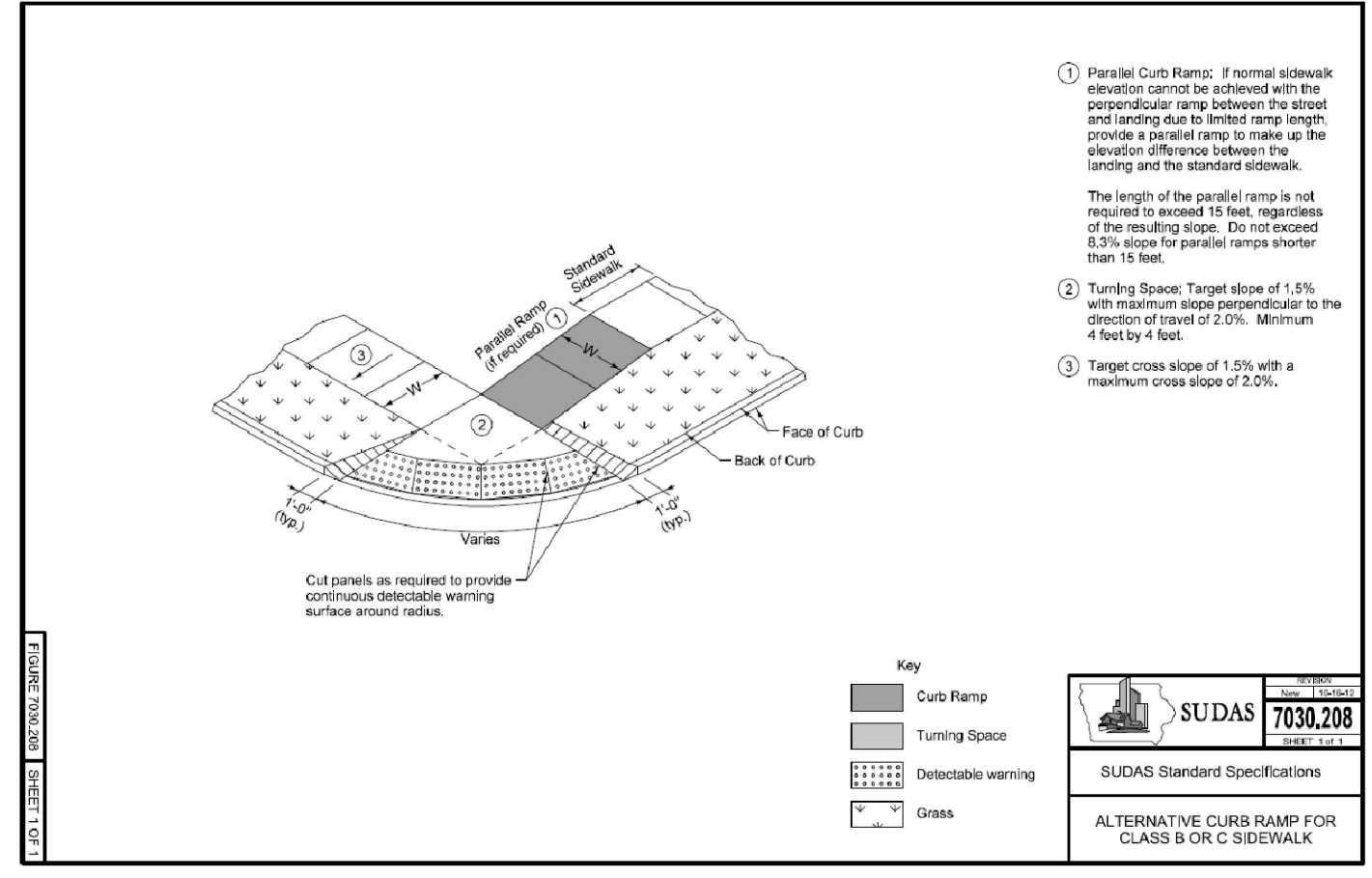
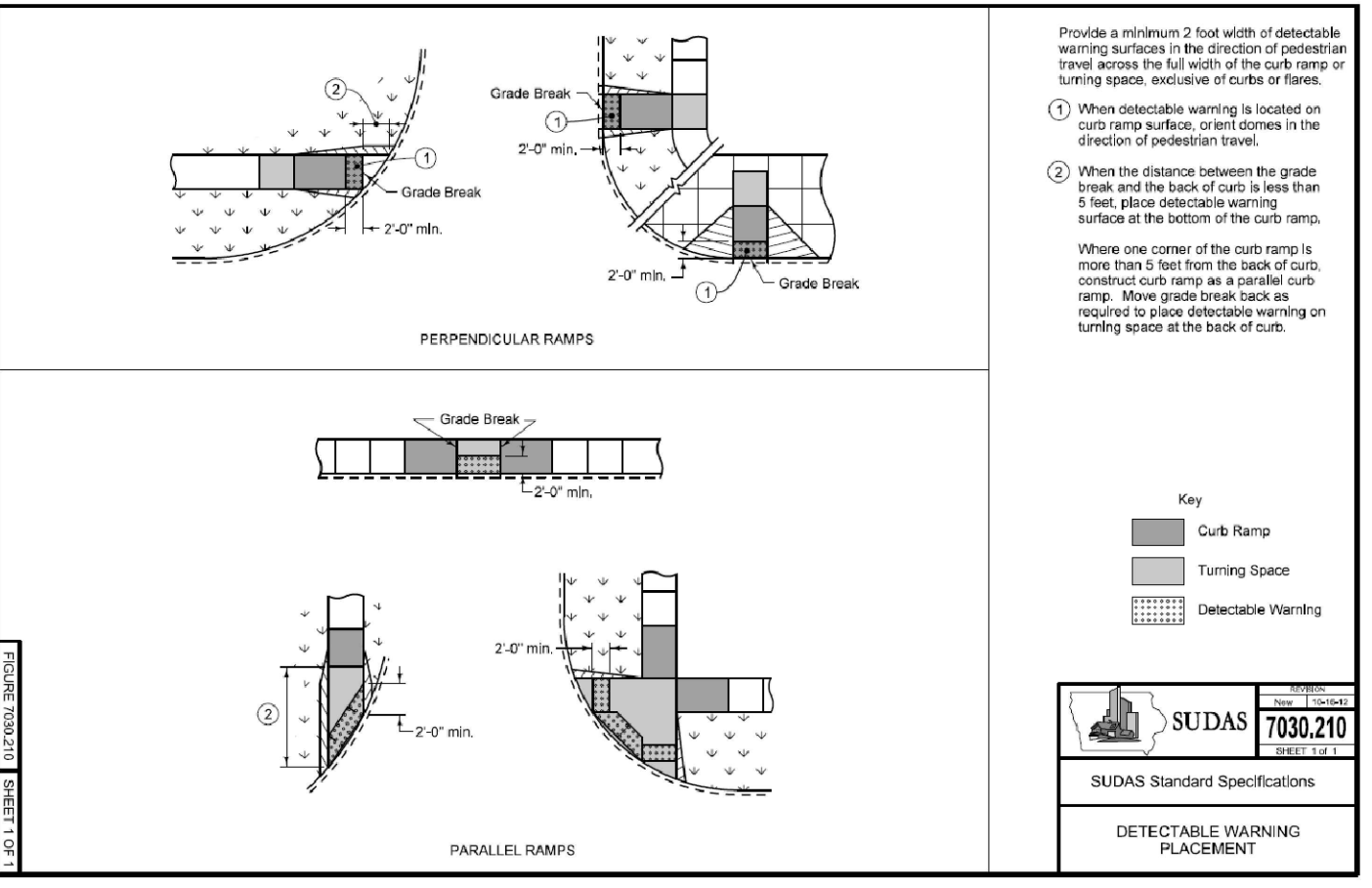


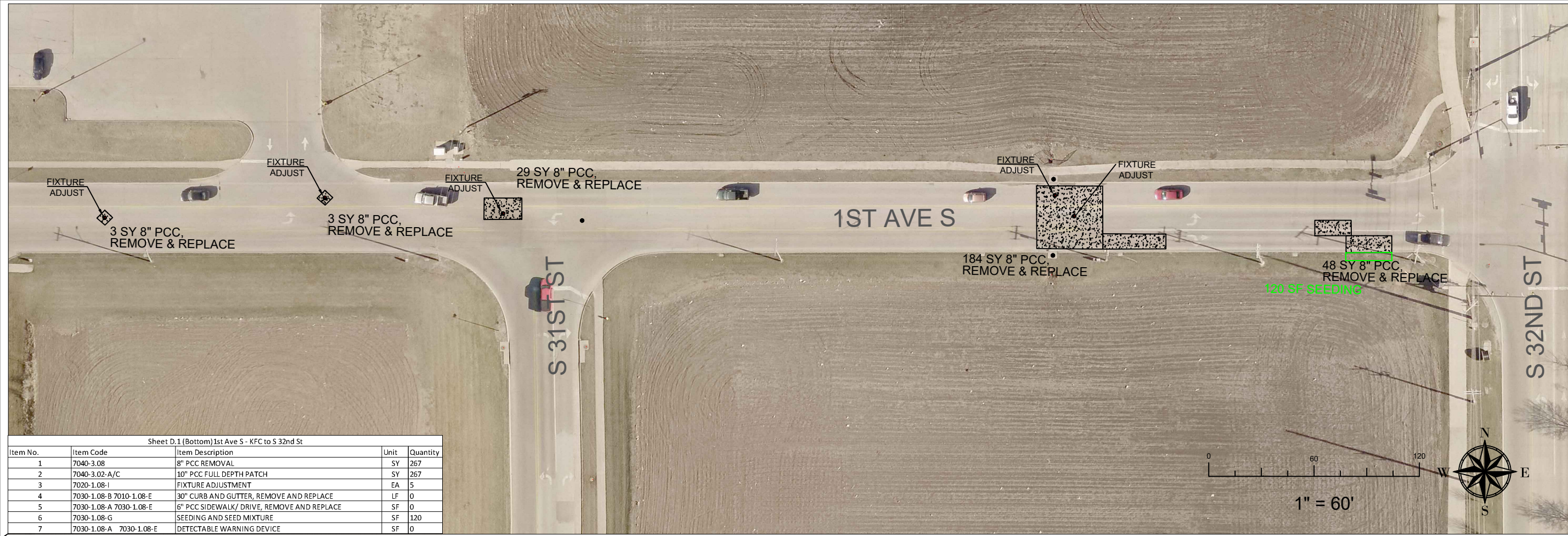
FIGURE 7030.210 SHEET 1 OF 1





Sheet D.1 (Top) 1st Ave S Target to KFC

| Item No. | Item Code | Item Description | Unit | Quantity |
|----------|-------------------------|--|------|----------|
| 1 | 7040-3.08 | 8" PCC REMOVAL | SY | 382 |
| 2 | 7040-3.02-A/C | 10" PCC FULL DEPTH PATCH | SY | 382 |
| 3 | 7020-1.08-I | FIXTURE ADJUSTMENT | EA | 4 |
| 4 | 7030-1.08-B 7010-1.08-E | 30" CURB AND GUTTER, REMOVE AND REPLACE | LF | 0 |
| 5 | 7030-1.08-A 7030-1.08-E | 6" PCC SIDEWALK/ DRIVE, REMOVE AND REPLACE | SF | 0 |
| 6 | 7030-1.08-G | SEEDING AND SEED MIXTURE | SF | 108 |
| 7 | 7030-1.08-A 7030-1.08-E | DETECTABLE WARNING DEVICE | SF | 0 |



Sheet D.1 (Bottom) 1st Ave S - KFC to S 32nd St

| Item No. | Item Code | Item Description | Unit | Quantity |
|----------|-------------------------|--|------|----------|
| 1 | 7040-3.08 | 8" PCC REMOVAL | SY | 267 |
| 2 | 7040-3.02-A/C | 10" PCC FULL DEPTH PATCH | SY | 267 |
| 3 | 7020-1.08-I | FIXTURE ADJUSTMENT | EA | 5 |
| 4 | 7030-1.08-B 7010-1.08-E | 30" CURB AND GUTTER, REMOVE AND REPLACE | LF | 0 |
| 5 | 7030-1.08-A 7030-1.08-E | 6" PCC SIDEWALK/ DRIVE, REMOVE AND REPLACE | SF | 0 |
| 6 | 7030-1.08-G | SEEDING AND SEED MIXTURE | SF | 120 |
| 7 | 7030-1.08-A 7030-1.08-E | DETECTABLE WARNING DEVICE | SF | 0 |

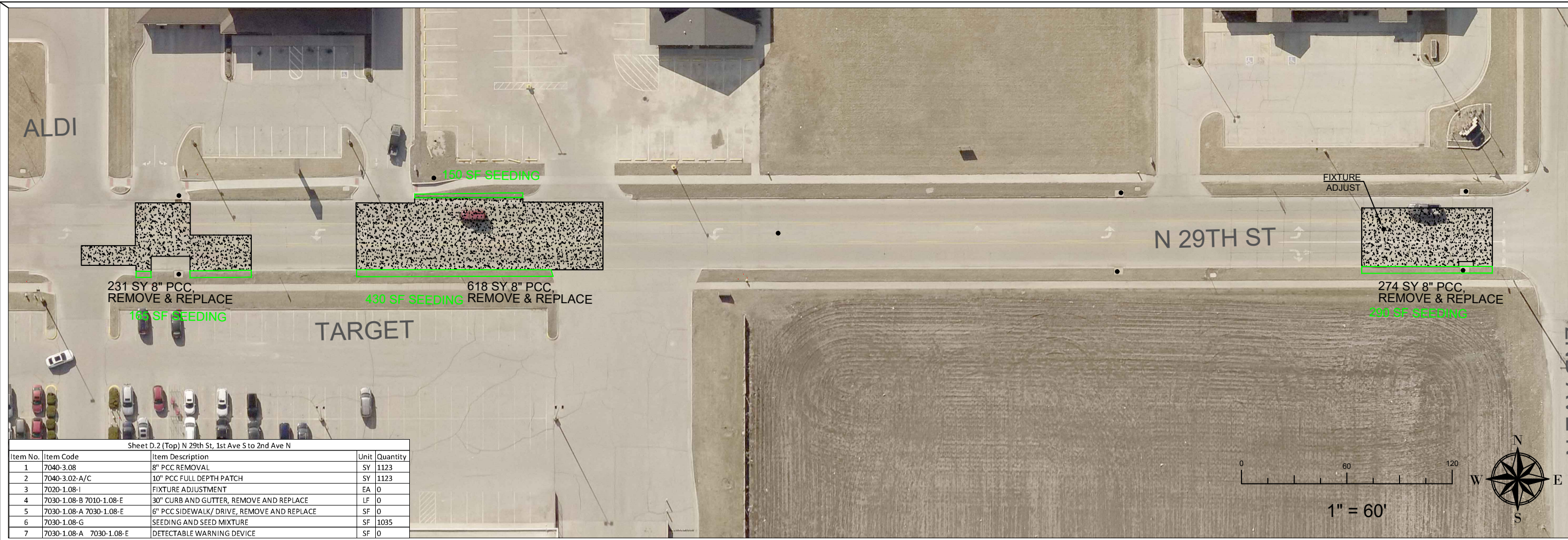
2025 PCC PATCH PROJECT
 City of Fort Dodge Engineering Department
 819 1ST AVE S FORT DODGE, IA

Designed David Odor, PLS
 Drawn David Odor, PLS
 Checked Austin Morrow, PE

Approved _____ Title _____
 Date _____

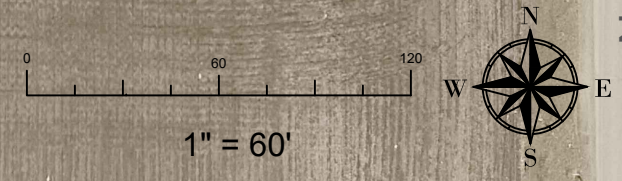
GENERAL NOTES

Date: 2-1-2025
 Sheet D.1



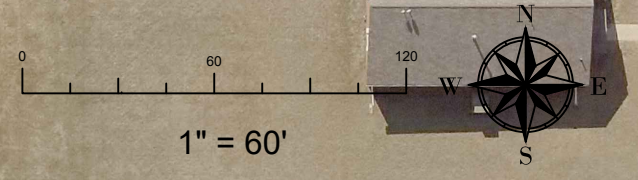
Sheet D.2 (Top) N 29th St, 1st Ave S to 2nd Ave N

| Item No. | Item Code | Item Description | Unit | Quantity |
|----------|-------------------------|--|------|----------|
| 1 | 7040-3.08 | 8" PCC REMOVAL | SY | 1123 |
| 2 | 7040-3.02-A/C | 10" PCC FULL DEPTH PATCH | SY | 1123 |
| 3 | 7020-1.08-I | FIXTURE ADJUSTMENT | EA | 0 |
| 4 | 7030-1.08-B 7010-1.08-E | 30" CURB AND GUTTER, REMOVE AND REPLACE | LF | 0 |
| 5 | 7030-1.08-A 7030-1.08-E | 6" PCC SIDEWALK/ DRIVE, REMOVE AND REPLACE | SF | 0 |
| 6 | 7030-1.08-G | SEEDING AND SEED MIXTURE | SF | 1035 |
| 7 | 7030-1.08-A 7030-1.08-E | DETECTABLE WARNING DEVICE | SF | 0 |



Sheet D.2 (Bottom) 27th St, 1st Ave S to South of 2nd Ave N

| Item No. | Item Code | Item Description | Unit | Quantity |
|----------|-------------------------|--|------|----------|
| 1 | 7040-3.08 | 8" PCC REMOVAL | SY | 676 |
| 2 | 7040-3.02-A/C | 10" PCC FULL DEPTH PATCH | SY | 676 |
| 3 | 7020-1.08-I | FIXTURE ADJUSTMENT | EA | 0 |
| 4 | 7030-1.08-B 7010-1.08-E | 30" CURB AND GUTTER, REMOVE AND REPLACE | LF | 0 |
| 5 | 7030-1.08-A 7030-1.08-E | 6" PCC SIDEWALK/ DRIVE, REMOVE AND REPLACE | SF | 285 |
| 6 | 7030-1.08-G | SEEDING AND SEED MIXTURE | SF | 610 |
| 7 | 7030-1.08-A 7030-1.08-E | DETECTABLE WARNING DEVICE | SF | 0 |

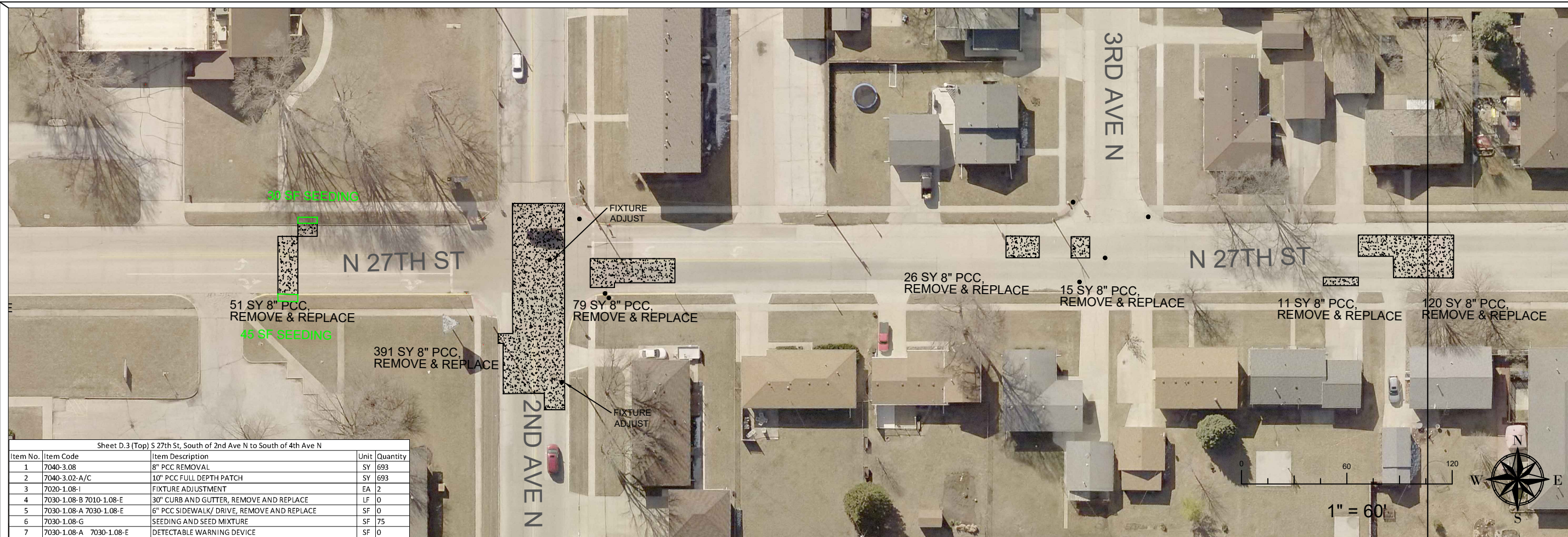


Designed David Odor, PLS
 Drawn David Odor, PLS
 Checked Austin Morrow, PE

2025 PCC PATCH PROJECT
 City of Fort Dodge Engineering Department
 FORT DODGE, IA
 819 1ST AVE S

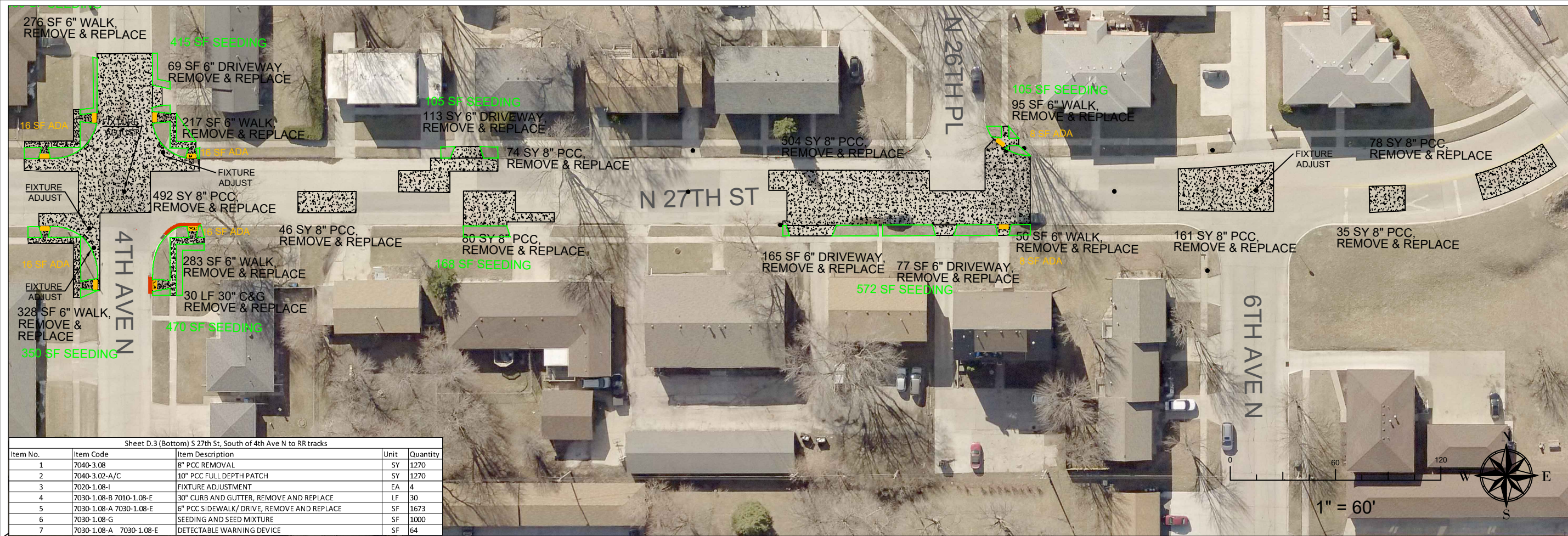
Approved _____ Title _____
 Date _____

GENERAL NOTES



Sheet D.3 (Top) S 27th St, South of 2nd Ave N to South of 4th Ave N

| Item No. | Item Code | Item Description | Unit | Quantity |
|----------|-------------------------|--|------|----------|
| 1 | 7040-3.08 | 8" PCC REMOVAL | SY | 693 |
| 2 | 7040-3.02-A/C | 10" PCC FULL DEPTH PATCH | SY | 693 |
| 3 | 7020-1.08-I | FIXTURE ADJUSTMENT | EA | 2 |
| 4 | 7030-1.08-B 7010-1.08-E | 30" CURB AND GUTTER, REMOVE AND REPLACE | LF | 0 |
| 5 | 7030-1.08-A 7030-1.08-E | 6" PCC SIDEWALK/ DRIVE, REMOVE AND REPLACE | SF | 0 |
| 6 | 7030-1.08-G | SEEDING AND SEED MIXTURE | SF | 75 |
| 7 | 7030-1.08-A 7030-1.08-E | DETECTABLE WARNING DEVICE | SF | 0 |



Sheet D.3 (Bottom) S 27th St, South of 4th Ave N to RR tracks

| Item No. | Item Code | Item Description | Unit | Quantity |
|----------|-------------------------|--|------|----------|
| 1 | 7040-3.08 | 8" PCC REMOVAL | SY | 1270 |
| 2 | 7040-3.02-A/C | 10" PCC FULL DEPTH PATCH | SY | 1270 |
| 3 | 7020-1.08-I | FIXTURE ADJUSTMENT | EA | 4 |
| 4 | 7030-1.08-B 7010-1.08-E | 30" CURB AND GUTTER, REMOVE AND REPLACE | LF | 30 |
| 5 | 7030-1.08-A 7030-1.08-E | 6" PCC SIDEWALK/ DRIVE, REMOVE AND REPLACE | SF | 1673 |
| 6 | 7030-1.08-G | SEEDING AND SEED MIXTURE | SF | 1000 |
| 7 | 7030-1.08-A 7030-1.08-E | DETECTABLE WARNING DEVICE | SF | 64 |

2025 PCC PATCH PROJECT
 City of Fort Dodge Engineering Department
 819 1ST AVE S FORT DODGE, IA

Designed David Odor, PLS
 Drawn David Odor, PLS
 Checked Austin Morrow, PE

Approved _____ Title _____
 Date _____

GENERAL NOTES

Date: 2-1-2025
 Sheet D.3